


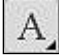

FUN WITH TEXT

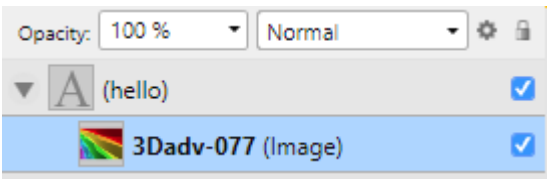
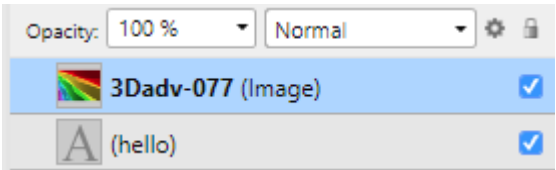
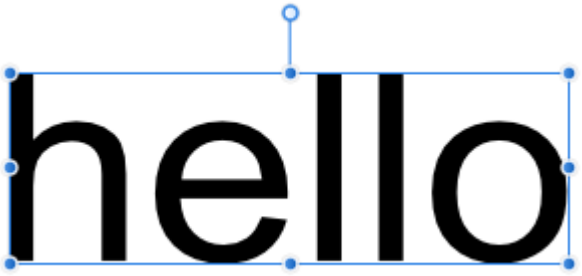
This is a very simple and easy tutorial to show you how you can manipulate text in Affinity Designer. You can let your imagination go wild. We will be creating the text, adding an image by clipping it to the text, and from there, the possibilities are endless.



LET'S GET STARTED


You will be filling text with a photo so you need to have a photo in mind before we get started. Something colorful works best.

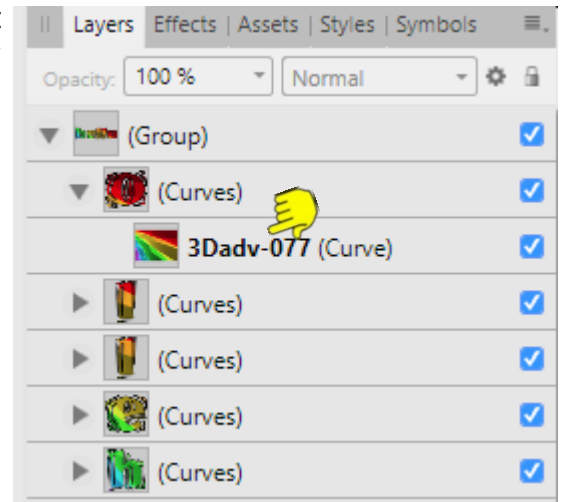
1. Open a new document 600 x 600 pixels.
2. Double click the **Zoom** tool  in the toolbar. This will set document to its actual size.
3. Select the **Artistic Text** tool  and click any where in the document. Type the word "hello".
4. While your text is still active, drag it out to a larger size (whatever suits you). Don't worry about the text style at this point.
5. Use the **Place Image** tool  to navigate to your photo and click **Open**. Click and drag the photo across your text so all of the text is covered. It will look like this in the Layers panel.
6. In the **Layers** panel, drag the photo down over the text layer and to the left to clip the photo to the text. The **Layers** panel should look like this.
7. On the document, the text will be filled with the colors from the photo.
8. With the text layer selected, scroll through your fonts until you find one you like. You can watch your text change as you scroll. Stop when you find one you like.
9. To adjust the position of your photo within the text, select the layer with your image, then drag the photo around on the document to re-position it.
10. Select the text layer again and add a stroke to the text. The size will depend on your likes.



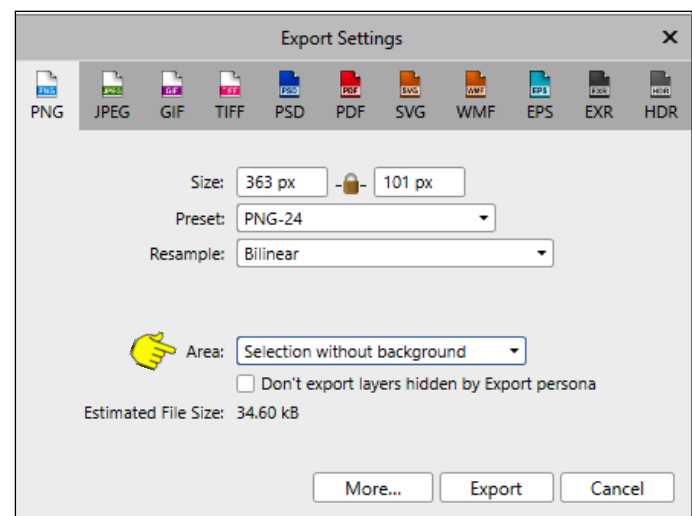
At this point, you can still drag your text out wider, taller or however you like. You can even use a different photo and toggle between them by hiding one or the other in the **Layers** panel (don't do that now though).

SPLITTING THE TEXT

1. Select your text on the document, right-click and select **Convert to Curves**. Your **Layers** panel will now show each letter separately with a clipped photo under each letter.
2. Open the layer that has the letter "o" and select the photo layer. On the document, drag the image around to reposition the image in just that one letter. You can reposition the photo separately for each letter if you wish.
3. Select the letter h, then use the **Node** tool  to drag a few nodes around to change the shape of the letter.
4. Change the shape of all your letters to give them a different look. Use the rotation handle to rotate some of the letters. You can use a different photo for a letter if you wish.



5. If you're finished playing with your text, it's time to save it.
6. Use the **Move** tool to drag a box around your text to select all of the letters.
7. **File\Export**. Select PNG, then change the **Area** to "**Selection without background**" to save an image with a transparent background. That's it, you're done! Enjoy!



PIRCnet invites you to join the **PIRCForum**. This is an active forum for Affinity Designer and Affinity Photo for Windows users. You'll find a wonderful group of warm, friendly, talented, and knowledgeable people who are ready and willing to share their expertise with you. There are creative activities for all skill levels. This forum is "family friendly", 100% free, and everyone is welcome.